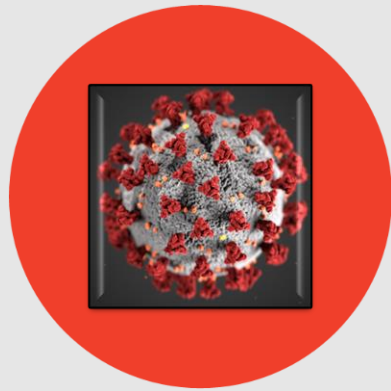


TETON COUNTY'S ROAD MAP TO RECOVERY PLAN & GUIDELINES

Teton County Health Department
Jodie Pond, MPH, Director of Health

Teton County's Plan for a Health and Economic Recovery



RESPONSE PHASE

COORDINATED PUBLIC HEALTH RESPONSE
WITH HISTORIC ECONOMIC STIMULUS

GOAL: 8-12 WEEKS

BEGINNING MARCH 11



STABILIZATION PHASE

PUBLIC HEALTH MEASURES AND ECONOMIC
INTERVENTIONS BEGIN TO TAKE HOLD

GOAL: 10-14 WEEKS

BEGINNING MAY 15



RECOVERY PHASE

RETURN TO STABILITY AND POSITIVE GROWTH
ADAPT, INNOVATE, AND OVERCOME

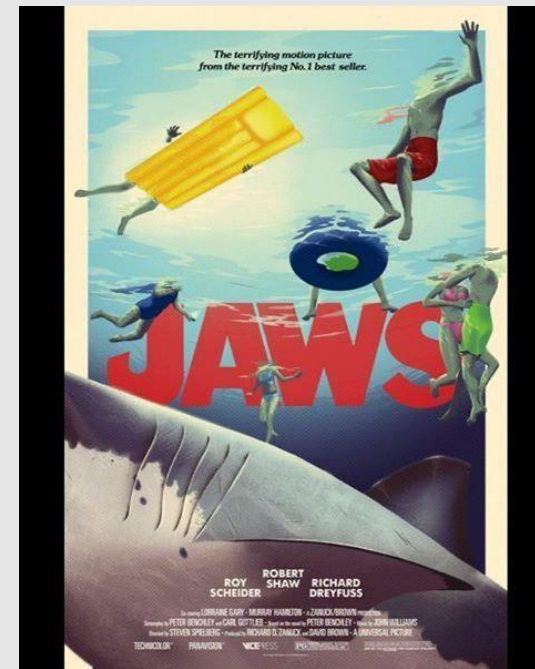
GOAL: ONGOING

Do we only have two bad options?

Hunker in a bunker!



Come on in, the water is fine!



HOW HIGH-RISK INDIVIDUALS CAN PROTECT THEMSELVES:

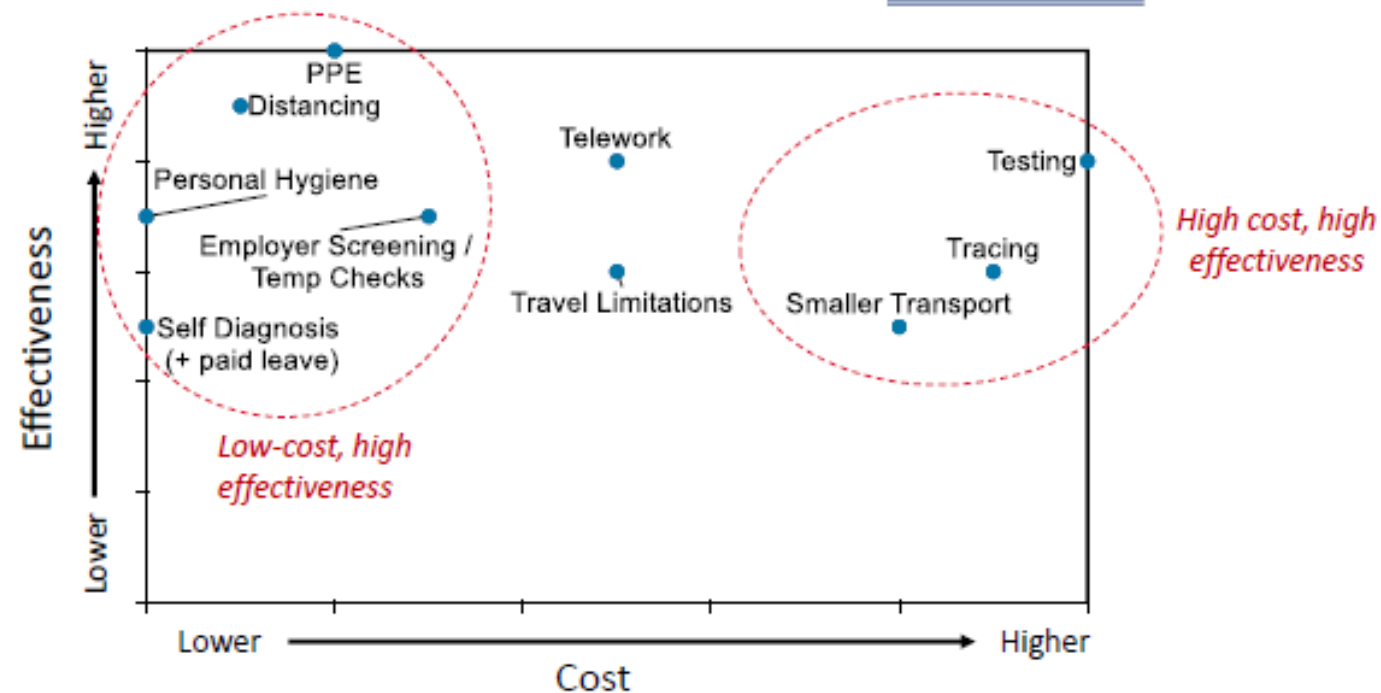
- See CDC recommendations for "[People Who Need Extra Precautions](#)" to obtain more specific guidance for high-risk individuals.
- Limit travel; if telework is not possible, limit travel to work-related travel only
- Limit visiting friends or family
- Limit attending gatherings with people outside your household or residence, especially with other high-risk individuals
- Do not visit hospitals, nursing homes, or other residential care facilities
- High-risk populations should take extra precaution to avoid close contact with multiple people, including using the same caretakers whenever possible
- Make special arrangements for delivery of pharmaceuticals and groceries if needed
- By taking extra precautions, we can protect even the most vulnerable around us, and stay healthy together.

There is a Middle Path

But first we must -

Protect High-Risk Individuals
through this middle path

Framework for Possible Policies



Large variety of possible strategies to help reduce R_0 – should begin with most effective & lowest cost, but will likely need higher cost effective measures as well (testing, tracing)

These Plans and Appendices are continually being updated and refined, please check back regularly to find the most current information.

[Teton County's Roadmap to Recovery Plan](#) - last updated 5-5-20

[Appendix A: Guidelines for the Public](#) - last updated 5-4-2020

Appendix B: Guidelines for Businesses - coming soon

[Appendix C: Guidelines for High Risk Individuals](#) - last updated 5-4-2020

Select Industry	High Risk	Moderate Risk	Low Risk	New Normal Risk
General Employer Guidelines	Employers exercise extreme caution, with employees working remotely, evaluating workforce concerns, and enacting strategies to minimize economic impact. Businesses that necessitate on-site work should monitor workforce for symptoms and well-being.	Employers exercise extreme caution, with employees working remotely, evaluating workforce concerns, and enacting strategies to minimize economic impact. Businesses that necessitate on-site work should monitor workforce for symptoms and well-being.	Employers encourage flexible working arrangements (rotating shifts, remote, etc.). Comply with distancing guidelines. Increased cleaning regimen of high-touch areas. Monitor employees for symptoms and well-being.	All businesses are open and operating under stricter hygiene and cleaning regimen. Monitoring health of workforce and customers.
Restaurants & Food Service	No dine-in service and extreme caution taken in food prep. Physical distancing maintained. Curbside pickup, takeout, and delivery only. Contactless payment encouraged. Create safe environment for staff.	Takeout/delivery options preferable. Dine-in services allowed with extreme precaution. Follow strict guidelines for physical distancing and staff monitoring. Contactless payment encouraged. Create safe environment for staff.	Dine-in services allowed with precaution. Follow strict guidelines for physical distancing and staff monitoring. Create safe environment for staff.	Dine-in restaurants operating under proper safety precautions for staff & customers.
Retail (Including grocery stores & pharmacies)	Essential retail (e.g. grocery) create safe environment for customers & staff w/ frequent reminders on distancing and hygiene. Monitor patrons and employees for symptoms. Employees wear face coverings.	Create safe environment for customers & staff w/ frequent reminders on distancing and hygiene. Monitor employees for symptoms. Employees wear face coverings.	Exercise discernment, establishing principles for safe environment & public trust. Monitor employees for symptoms and encourage face coverings.	Operate under heightened hygiene & cleaning standards. Monitor employees for symptoms.
Hotel, Tourism, & Accommodations	Limited operations. Take extreme precaution for staff & guests.	Take precautions with shared spaces, w/ increased cleaning regimen. Self-serve buffets closed. Employees wear face coverings.	Businesses take precautions with shared spaces. Increased cleaning regimen	Industry open w/ precautions for staff & guests.
Events & Entertainment	In-person operation of this industry is allowable under strict social-distancing restrictions, increased cleaning regimen and group size must allow for all distancing guidelines to be followed within each event venue.	In-person operation of this industry is allowable with strict social-distancing requirements and increased cleaning regimen. Operational protocols in place to ensure safe distancing restrictions are met.	In-person operation of this industry is allowable with strict social-distancing requirements and increased cleaning regimen. Operational protocols in place to ensure safe distancing restrictions are met.	Large groups allowed. Mass gatherings follow proper safety procedures & precautions for monitoring symptoms.
Personal Services	Extreme limitations	Operate under strict hygiene protocols. Service provider & customer must wear face coverings. Meticulous monitoring of symptoms.	Operate under strict hygiene protocols. Service provider & customer must wear face coverings. Meticulous monitoring of symptoms.	Industry open with strict hygiene regimen and symptom monitoring.
Home Repair	Strict hygiene & reduced group interactions. Monitor symptoms of staff.	Strict hygiene & reduced group interactions. Monitor symptoms of staff.	Strict hygiene. Monitor symptoms of staff.	Increased hygiene.
Gyms	Fitness centers & gyms are closed.	Fitness centers & gyms are recommended to be closed. If open, fitness & gyms should follow space & cleaning guidance.	Fitness centers & gyms open with specific space and cleaning supply guidance.	Gyms open with some cleaning supply guidance.
Construction/ Manufacturing	Strict hygiene & reduced group interactions. Monitor symptoms of staff.	Strict hygiene & reduced group interactions. Monitor symptoms of staff.	Strict hygiene. Monitor symptoms of staff.	Increased hygiene.
Day Care	Enhanced cleaning and distancing protocols. No symptomatic children.	Enhanced cleaning and distancing protocols. No symptomatic children.	Enhanced cleaning & distancing protocols. No symptomatic children.	Enhanced cleaning. No symptomatic children.

Color-Coded Public Health Guidance System

Red (High Risk) – Response Phase

Orange (Moderate Risk) – Stabilization Phase

Yellow (Low Risk)– Stabilization Phase

Green (New Normal Risk)– Recovery Phase



Community Messaging

FLATTEN THE CURVE IN JACKSON HOLE

STAY BACK

ALWAYS GIVE 6 FEET

A REMINDER TO BE A GOOD NEIGHBOR.
THE WAY THROUGH THIS IS TOGETHER.



*Don't Hitchhike,
No Tailgating &
Drive Your Own Car*



FLATTEN THE CURVE IN JACKSON HOLE

ONLY YOU

CAN WASH YOUR HANDS

*20 Seconds Can
Save Lives!*



A REMINDER TO BE A GOOD NEIGHBOR. THE WAY THROUGH THIS IS TOGETHER.



There is a path through this... but it will come with costs

Must follow the Public Health Plan & Guidance

- Invest in high cost policies – Testing and Contact tracing
- Buy in from the community and businesses to follow the public health orders & guidance
- Risk Communication Messaging
- It's not a big ask to wear a mask!
- Physical Distancing, etc.

We will not go back to “Normal” until there is a vaccine, or we have herd immunity

- Increased disease and death in our community
- Continued Harm to the Economy
- Economic Harm to Individuals – the most economically vulnerable in our community
- Mental Health Concerns



THANK YOU

<http://www.tetoncountywy.gov/2114/COVID-19-Public-Health-Guidance>

Contact information
Jodie Pond
307-732-8461
jodie.pond@wyo.gov